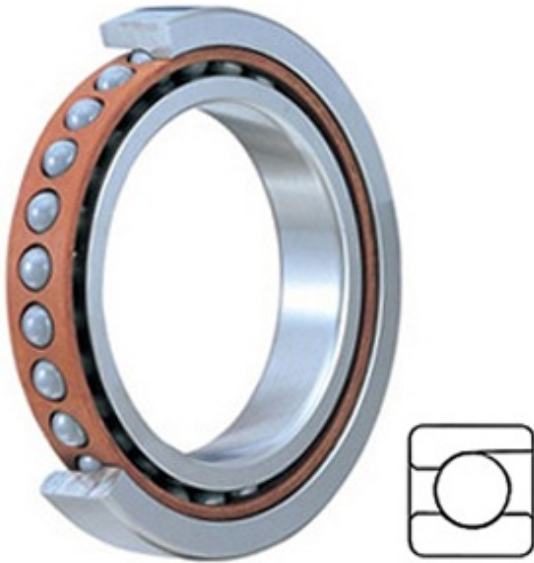




# Shandong Tinghan Bearing Co., Ltd.



7028CVUJ84 Bearing 2D drawings and 3D CAD models

5.512 Inch | 140 Millimeter x 8.268 Inch | 210 Millimeter x 1.299 Inch | 33 Millimeter NTN 7028CVUJ84 Precision Ball Bearings

Bearing No. 7028CVUJ84

|                      |   |
|----------------------|---|
| Category             | Precision Ball Bearings   |
| Inventory            | 0.0   |
| Manufacturer Name    | NTN   |
| Minimum Buy Quantity | N/A   |
| Weight               | 3.458   |
| Product Group        | B04270  |
| Enclosure            | Open  |
| Precision Class      | ABEC 7   ISO P4   |
| Material - Ball      | Steel   |
| Number of Bearings   | 1 (Single)  |
| Contact Angle        | 15 Degree   |
| Preload              | Medium  |
| Raceway Style        | 1 Rib Outer Ring  |
| Cage Material        | Phenolic  |
| Rolling Element      | Ball Bearing  |
| Mounting Arrangement | Universal   |
| Flush Ground         | Yes   |
| Inch - Metric        | Metric  |
| Other Features       | Single Row   Angular Contact  |
| Long Description     | 140MM Bore; 210MM Outside Diameter; 33MM Width; Open Enclosure; ABEC 7   ISO P4 Precision; Steel Ball Material; 1 (Single) Bearing; 15 Degree Contact Angle; Phenolic |



## Shandong Tinghan Bearing Co., Ltd.

|                        |   |
|------------------------|---|
|                        | Cage Material; 1 Rib Outer Ring Ra                                |
| Category               | Precision Ball Bearings   |
| UNSPSC                 | 31171531  |
| Harmonized Tariff Code | 8482.10.50.28   |
| Noun                   | Bearing   |
| Keyword String         | Ball Angular Contact  |
| Manufacturer URL       | <a href="http://www.ntnamerica.com">http://www.ntnamerica.com</a> |
| Weight / LBS           | 7.541   |
| d                      | 5.512 Inch   140 Millimeter                                       |
| B                      | 1.299 Inch   33 Millimeter  |
| D                      | 8.268 Inch   210 Millimeter                                       |