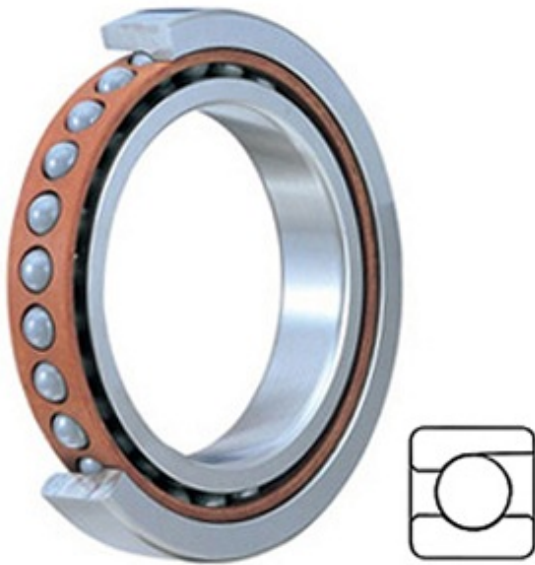




Shandong Tinghan Bearing Co., Ltd.



7020 CDGC/P4A Bearing 2D drawings and 3D CAD models

3.937 Inch | 100 Millimeter x 5.906 Inch | 150 Millimeter x 0.945 Inch | 24 Millimeter SKF 7020 CDGC/P4A Precision Ball Bearings

Bearing No. 7020 CDGC/P4A

Category	Precision Ball Bearings
Inventory	0.0
Manufacturer Name	SKF
Minimum Buy Quantity	N/A
Weight	0
Product Group	B04270
Enclosure	Open
Precision Class	ABEC 7 ISO P4
Material - Ball	Steel
Number of Bearings	1 (Single)
Contact Angle	15 Degree
Preload	Medium
Raceway Style	1 Rib Outer Ring
Cage Material	Phenolic
Rolling Element	Ball Bearing
Mounting Arrangement	Universal
Flush Ground	Yes
Inch - Metric	Metric
Other Features	Single Row Angular Contact High Capacity Basic Design
Long Description	100MM Bore; 150MM Outside Diameter; 24MM Width; Open Enclosure; ABEC 7 ISO P4 Precision; Steel Ball Material; 1 (Single) Bearing; 15 Degree



Shandong Tinghan Bearing Co., Ltd.

	Contact Angle; Phenolic Cage Material; 1 Rib Outer Ring Ra
Category	Precision Ball Bearings
UNSPSC	31171531
Harmonized Tariff Code	8482.10.50.28
Noun	Bearing
Keyword String	Ball Angular Contact
Manufacturer URL	http://www.skf.com
D	5.906 Inch 150 Millimeter
B	0.945 Inch 24 Millimeter
d	3.937 Inch 100 Millimeter