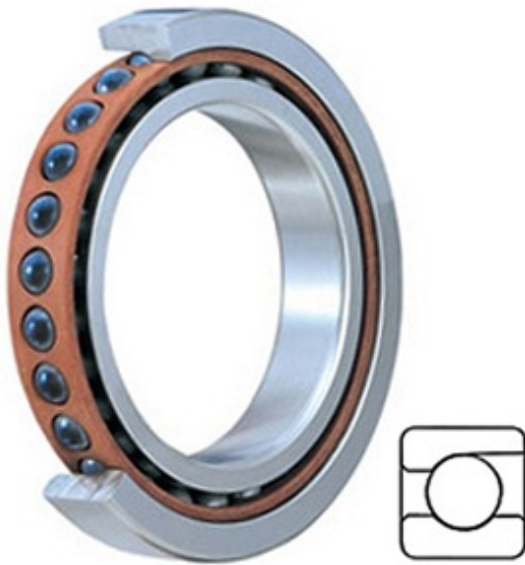




Shandong Tinghan Bearing Co., Ltd.



2MMC9111WI SUH Bearing 2D drawings and 3D CAD models

2.165 Inch | 55 Millimeter x 3.543 Inch | 90 Millimeter x 0.709 Inch | 18 Millimeter TIMKEN 2MMC9111WI SUH Precision Ball Bearings

Bearing No. 2MMC9111WI SUH

Category	Precision Ball Bearings
Inventory	0.0
Manufacturer Name	TIMKEN
Minimum Buy Quantity	N/A
Weight	0.381
EAN	0087796257320
Product Group	B04270
Enclosure	Open
Precision Class	ABEC 7 ISO P4
Material - Ball	Ceramic
Number of Bearings	1 (Single)
Contact Angle	15 Degree
Preload	Heavy
Raceway Style	1 Rib Outer Ring
Cage Material	Phenolic
Rolling Element	Ball Bearing
Mounting Arrangement	Universal
Flush Ground	Yes
Inch - Metric	Metric
Other Features	Single Row Angular Contact Super High Precision Hybrid Corrosion Resistant Ball
Long Description	55MM Bore; 90MM Outside Diameter; 18MM Width; Open Enclosure;



Shandong Tinghan Bearing Co., Ltd.

	ABEC 7 ISO P4 Precision; Ceramic Ball Material; 1 (Single) Bearings; 15 Degree Contact Angle; Phenolic Cage Material; 1 Rib Outer Ring R
Category	Precision Ball Bearings
UNSPSC	31171531
Harmonized Tariff Code	8482.10.50.28
Noun	Bearing
Keyword String	Angular Contact Ball
Manufacturer URL	http://www.timken.com
Manufacturer Item Number	2MMC9111WI SUH
Weight / LBS	0.84
B	0.709 Inch 18 Millimeter
d	2.165 Inch 55 Millimeter
D	3.543 Inch 90 Millimeter