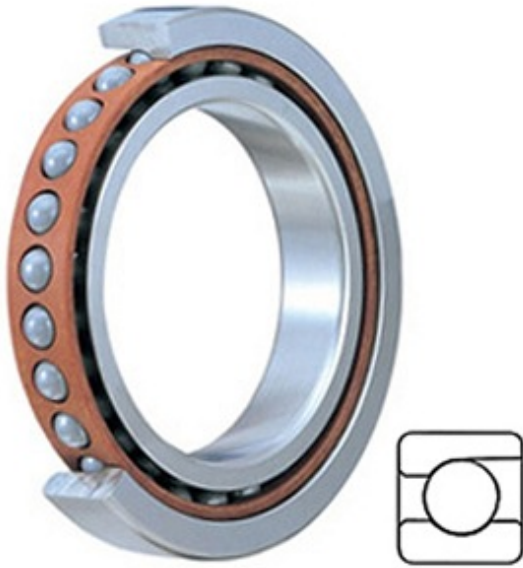




Shandong Tinghan Bearing Co., Ltd.



2.25 Inch | 57.15 Millimeter x 4.75 Inch | 120.65 Millimeter x 1.125 Inch | 28.575 Millimeter
TIMKEN MM115EX 350 C1 Precision Ball Bearings

Bearing No. MM115EX 350 C1

MM115EX 350 C1 Bearing 2D drawings and 3D CAD models

Category	Precision Ball Bearings
Inventory	0.0
Manufacturer Name	TIMKEN
Minimum Buy Quantity	N/A
Weight	0
EAN	0087796069817
Product Group	B04270
Enclosure	Open
Precision Class	ABEC 7 ISO P4 ABEC 9 ISO P2
Material - Ball	Steel
Number of Bearings	1 (Single)
Contact Angle	15 Degree
Preload	None
Raceway Style	1 Rib Outer Ring
Cage Material	Nylon
Rolling Element	Ball Bearing
Flush Ground	No
Inch - Metric	Inch
Other Features	Single Row Angular Contact Spindle Bearing
Long Description	2-1/4" Bore; 4-3/4" Outside Diameter; 1-1/8" Width; Open Enclosure; ABEC 7 ISO P4 ABEC 9 ISO P2 Precision; Steel Ball



Shandong Tinghan Bearing Co., Ltd.

	Material; 1 (Single) Bearing; 15 Degree Contact Angle; Nylon
Category	Precision Ball Bearings
UNSPSC	31171531
Harmonized Tariff Code	8482.10.50.28
Noun	Bearing
Keyword String	Ball Angular Contact
Manufacturer URL	http://www.timken.com
d	2.25 Inch 57.15 Millimeter
B	1.125 Inch 28.575 Millimeter
D	4.75 Inch 120.65 Millimeter