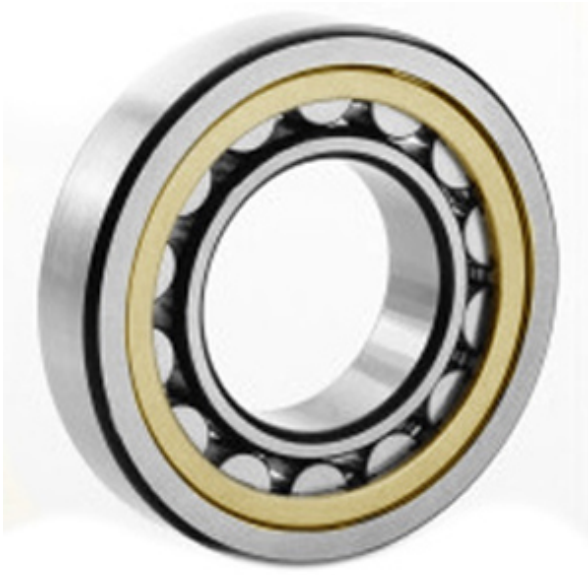




Shandong Tinghan Bearing Co., Ltd.



4.134 Inch | 105 Millimeter x 7.48 Inch | 190
 Millimeter x 1.417 Inch | 36 Millimeter
**CONSOLIDATED BEARING 20221 M Spherical
 Roller Bearings**

Bearing No. 20221 M

20221 M Bearing 2D drawings and 3D CAD models

Category	Spherical Roller Bearings
Inventory	0.0
Manufacturer Name	CONSOLIDATED BEARING
Minimum Buy Quantity	N/A
Weight	4.67
EAN	0644075155816
Product Group	B04311
Internal Clearance	C0-Medium
Mounting Method	Shaft Mount
Rolling Element	Spherical Roller Bearing
Bore Profile	Straight
Cage Material	Bronze
Enclosure	Open
Number of Rows of Rollers	Single Row
Relubricatable	No
Withdrawal Sleeve	Not Applicable
Withdrawal Nut	Not Applicable
Inch - Metric	Metric
Long Description	105MM Straight Bore; 190MM Outside Diameter; 36MM Width; C0-Medium Clearance; Shaft Mount; Single Row of Spherical Roller Bearings; Bronze Cage Material; Open



Shandong Tinghan Bearing Co., Ltd.

	Enclosure; Not Relubricatable
Category	Spherical Roller Bearing
UNSPSC	31171510
Harmonized Tariff Code	84823040
Noun	Bearing
Keyword String	Spherical
Manufacturer URL	http://www.consbrgs.com/
Weight / LBS	10.295
Adapter Part Number	Not Applicable Inch Not Applicable Millimeter
B	1.417 Inch 36 Millimeter
D	7.48 Inch 190 Millimeter
d	4.134 Inch 105 Millimeter