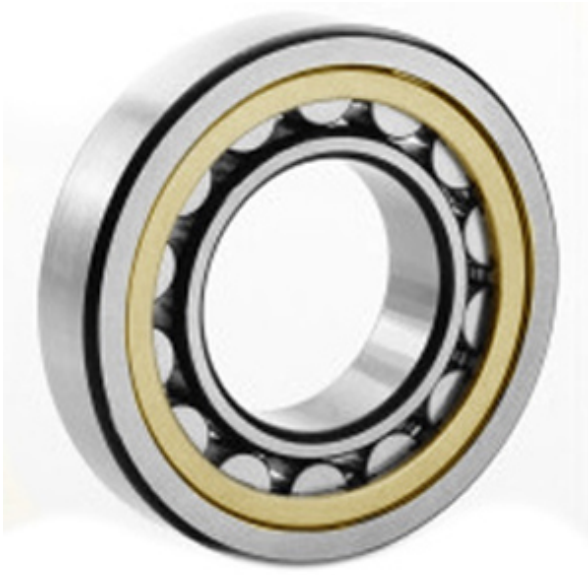




Shandong Tinghan Bearing Co., Ltd.



20224-KM Bearing 2D drawings and 3D CAD models

4.724 Inch | 120 Millimeter x 8.465 Inch | 215 Millimeter x 1.575 Inch | 40 Millimeter
CONSOLIDATED BEARING 20224-KM
Spherical Roller Bearings

Bearing No. 20224-KM

Category	Spherical Roller Bearings
Inventory	0.0
Manufacturer Name	CONSOLIDATED BEARING
Minimum Buy Quantity	N/A
Weight	6.42
EAN	0644075156356
Product Group	B04311
Internal Clearance	C0-Medium
Mounting Method	Adapter Mount
Rolling Element	Spherical Roller Bearing
Bore Profile	Tapered
Cage Material	Bronze
Enclosure	Open
Number of Rows of Rollers	Single Row
Relubricatable	No
Adapter Part Number - Millimeter	H3024 (Specify bore)
Inch - Metric	Metric
Long Description	120MM Tapered Bore; 215MM Outside Diameter; 40MM Width; C0-Medium Clearance; Adapter Mount; Single Row of Spherical Roller Bearings; Bronze Cage Material; Open Enclosure; Not



Shandong Tinghan Bearing Co., Ltd.

	Relubricatable; Adapter P
Other Features	Order adapter or withdrawal sleeve or nut separately. Others may be available
Category	Spherical Roller Bearing
UNSPSC	31171510
Harmonized Tariff Code	84823040
Noun	Bearing
Keyword String	Spherical
Manufacturer URL	http://www.consbrgs.com/
Weight / LBS	14.131
B	1.575 Inch 40 Millimeter
d	4.724 Inch 120 Millimeter
D	8.465 Inch 215 Millimeter