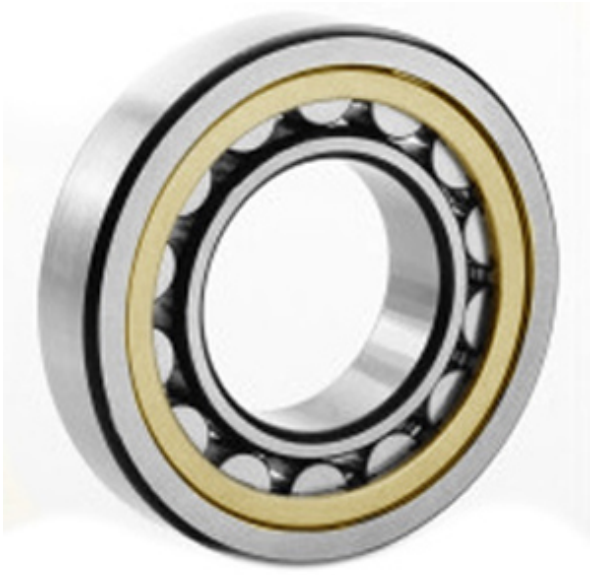




Shandong Tinghan Bearing Co., Ltd.



2.559 Inch | 65 Millimeter x 4.724 Inch | 120
 Millimeter x 0.906 Inch | 23 Millimeter
CONSOLIDATED BEARING 20213-KM C/3
 Spherical Roller Bearings

Bearing No. 20213-KM C/3

20213-KM C/3 Bearing 2D drawings and 3D CAD models

| | |
|----------------------------------|---|
| Category | Spherical Roller Bearings |
| Inventory | 0.0 |
| Manufacturer Name | CONSOLIDATED BEARING |
| Minimum Buy Quantity | N/A |
| Weight | 1.19 |
| EAN | 0644075156189 |
| Product Group | B04311 |
| Internal Clearance | C3-Loose |
| Mounting Method | Adapter Mount |
| Rolling Element | Spherical Roller Bearing |
| Bore Profile | Tapered |
| Cage Material | Bronze |
| Enclosure | Open |
| Number of Rows of Rollers | Single Row |
| Relubricatable | No |
| Adapter Part Number - Millimeter | H213 (Specify bore) |
| Inch - Metric | Metric |
| Long Description | 65MM Tapered Bore; 120MM Outside Diameter; 23MM Width; C3-Loose Clearance; Adapter Mount; Single Row of Spherical Roller Bearings; Bronze Cage Material; Open Enclosure; Not |



Shandong Tinghan Bearing Co., Ltd.

| | |
|------------------------|---|
| | Relubricatable; Adapter Par |
| Other Features | Order adapter or withdrawal sleeve or nut separately. Others may be available |
| Category | Spherical Roller Bearing |
| UNSPSC | 31171510 |
| Harmonized Tariff Code | 84823040 |
| Noun | Bearing |
| Keyword String | Spherical |
| Manufacturer URL | http://www.consbrgs.com/ |
| Weight / LBS | 2.623 |
| D | 4.724 Inch 120 Millimeter |
| d | 2.559 Inch 65 Millimeter |
| B | 0.906 Inch 23 Millimeter |