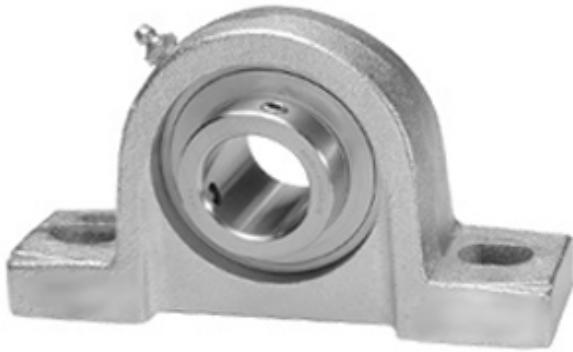




Shandong Tinghan Bearing Co., Ltd.

1.75 Inch | 44.45 Millimeter x 1.937 Inch | 49.2 Millimeter x 2.125 Inch | 53.98 Millimeter IPTCI SUCNPP 209 28 Pillow Block Bearings



Bearing No. SUCNPP 209 28

SUCNPP 209 28 Bearing 2D drawings and 3D CAD models

Category	Pillow Block Bearings
Inventory	0.0
Manufacturer Name	IPTCI BEARINGS
Minimum Buy Quantity	N/A
Weight	2.585
Product Group	M06110
Number of Mounting Holes	2
Mounting Method	Set Screw
Housing Style	2 Bolt Pillow Block
Rolling Element	Ball Bearing
Housing Material	Nickel Coated Cast Iron
Expansion / Non-expansion	Non-expansion
Mounting Bolts	1/2 Inch
Relubricatable	Yes
Insert Part Number	SUC209-28
Seals	B Seal
Housing Configuration	1 Piece Solid
Inch - Metric	Inch
Other Features	Single Row Corrosion Resistant Stainless Steel Insert High Base Has Slinger Optional Locking Collar
Long Description	2 Bolt Pillow Block; 1-3/4" Bore; 2-1/8" Base to Center Height; Set Screw Mount; Ball Bearing; Relubricatable;



Shandong Tinghan Bearing Co., Ltd.

	Nickel Coated Cast Iron; B Seal; Non-expansion
Category	Pillow Block
UNSPSC	31171511
Harmonized Tariff Code	8483.20.40.40
Noun	Bearing
Keyword String	Pillow Block
Manufacturer URL	http://www.iptci.com
Manufacturer Item Number	SUCNPP 209 28
Weight / LBS	5.7
Bolt Spacing Minimum	0 Inch 0Millimeter
Bolt Spacing Maximum	0 Inch 0Millimeter
Actual Bolt Center to Center	5.8 Inch 146.1Millimeter
D	1.937 Inch 49.2 Millimeter
d	1.75 Inch 44.45 Millimeter
Nominal Bolt Center to Center	5.8 Inch 146.5 Millimeter
B	2.125 Inch 53.98 Millimeter